

DLM and Dataset Development Software

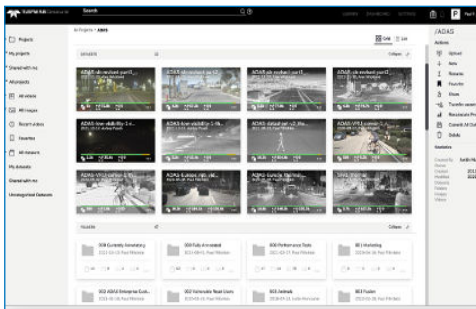
# CONSERVATOR™



Conservator is a powerful cloud-based data lifecycle management (DLM) application that enables data scientists to quickly build image datasets and accelerate AI development. Conservator empowers distributed teams to input and curate raw data, create and manage ground-truth annotations, and track revisions on large-scale datasets. The platform provides an enterprise-grade, end-to-end solution for managing perception data for systems such as neural network-based object detectors.

AI development is further accelerated with access to the Teledyne FLIR library of more than a million thermal and visible annotations across a wide range of applications including automotive, defense, and security. Conservator Insights™, a local application, gives data scientists the ability to interactively explore model performance issues like false positives and missed detections.

This complete ecosystem provides the necessary tools to manage data and analyze model performance using reproducible, production-ready workflows. Conservator is an easy-to-use and cost-effective solution for perception engineers developing today's AI imaging solutions.



## ACCELERATE DEVELOPMENT WITH TELEDYNE FLIR ANNOTATED IMAGE LIBRARY

Access image subsets from a range of applications including automotive, defense, and security

- More than one million thermal infrared and visible annotations
- Annotated images subsets available for research and development
- License data for production models



## BUILD DATASETS WITH ENTERPRISE-SCALE WORKFLOW

Cloud-based data upload, annotation, curation, and quality control tools

- Upload and organize video, images, and associated data
- Integrated annotation tool and support for third-party annotation providers
- Curate and search videos, datasets, images, and annotated objects
- Scalable for small teams to large enterprises



## OPTIMIZE USING SECURE, CLOUD-BASED SOFTWARE WITH AI PERFORMANCE TOOLS

Reproduce results using integrated data version control, built to support petabyte-scale data collections

- Robust dataset version control
- Data is managed securely in dedicated customer instances
- Government cloud instance available for defense projects
- Pinpoint model performance issues with Conservator Insights analysis and visualization tool

For more information visit:  
[www.flir.com/conservator](http://www.flir.com/conservator)

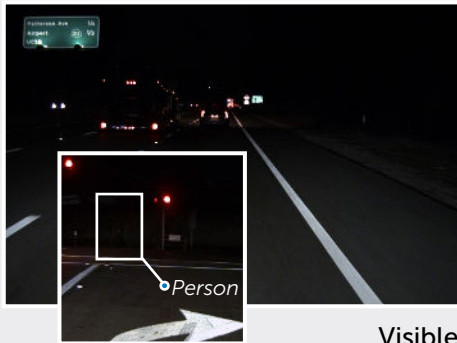
[www.teledyneflir.com](http://www.teledyneflir.com)

Imagery for illustration purposes only. Specifications are subject to change without notice. ©2022 Teledyne FLIR LLC, Inc. All rights reserved.  
 09/01/2022 REV1

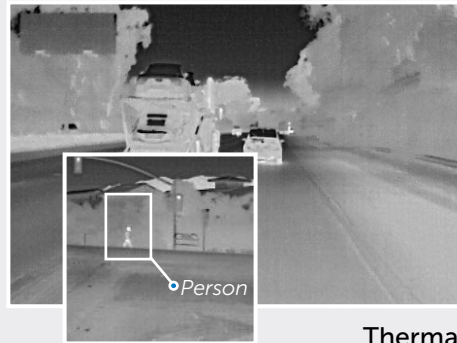
## SOFTWARE OVERVIEW

	TEAMS EDITION	ENTERPRISE EDITION
Team Size	Up to 5 users	Customizable
Starter Dataset (total annotations)	532K+	1.3M+
Visible Annotations (image/video)	192K / 86K	472K / 284K
Thermal Annotations (image/video)	192K / 62K	381K / 232K
Visible Frames (image/video)	11K / 4K	28K / 18K
Thermal Frames (image/video)	12K / 4K	29K / 22K
Dedicated On-Boarding	Included	Included
Dedicated Technical Support	-	Included
Data Subscription Offer	-	Included
Custom Machine Annotations	-	Included

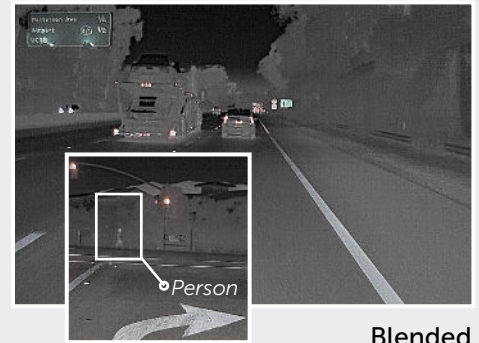
*Specifications are subject to change without notice.*



Visible



Thermal



Blended

**SANTA BARBARA**  
Teledyne FLIR LLC, Inc.  
6769 Hollister Ave.  
Goleta, CA 93117  
PH: +1 805.690.6602

**EUROPE**  
Teledyne FLIR LLC, Inc.  
Luxemburgstraat 2  
2321 Meer  
Belgium  
PH: +32 (0) 3665 5106

Equipment described herein is subject to US export regulations and may require a license prior to export. Diversion contrary to US law is prohibited. Imagery for illustration purposes only. Specifications are subject to change without notice. ©2022 Teledyne FLIR LLC, Inc.

Approved for public release. Teledyne FLIR Approved [FLIRGTC-SBA-001]

All rights reserved. Revised 09/01/2022

22-0830-OEM-AI-Conservator-Datasheet-LTR